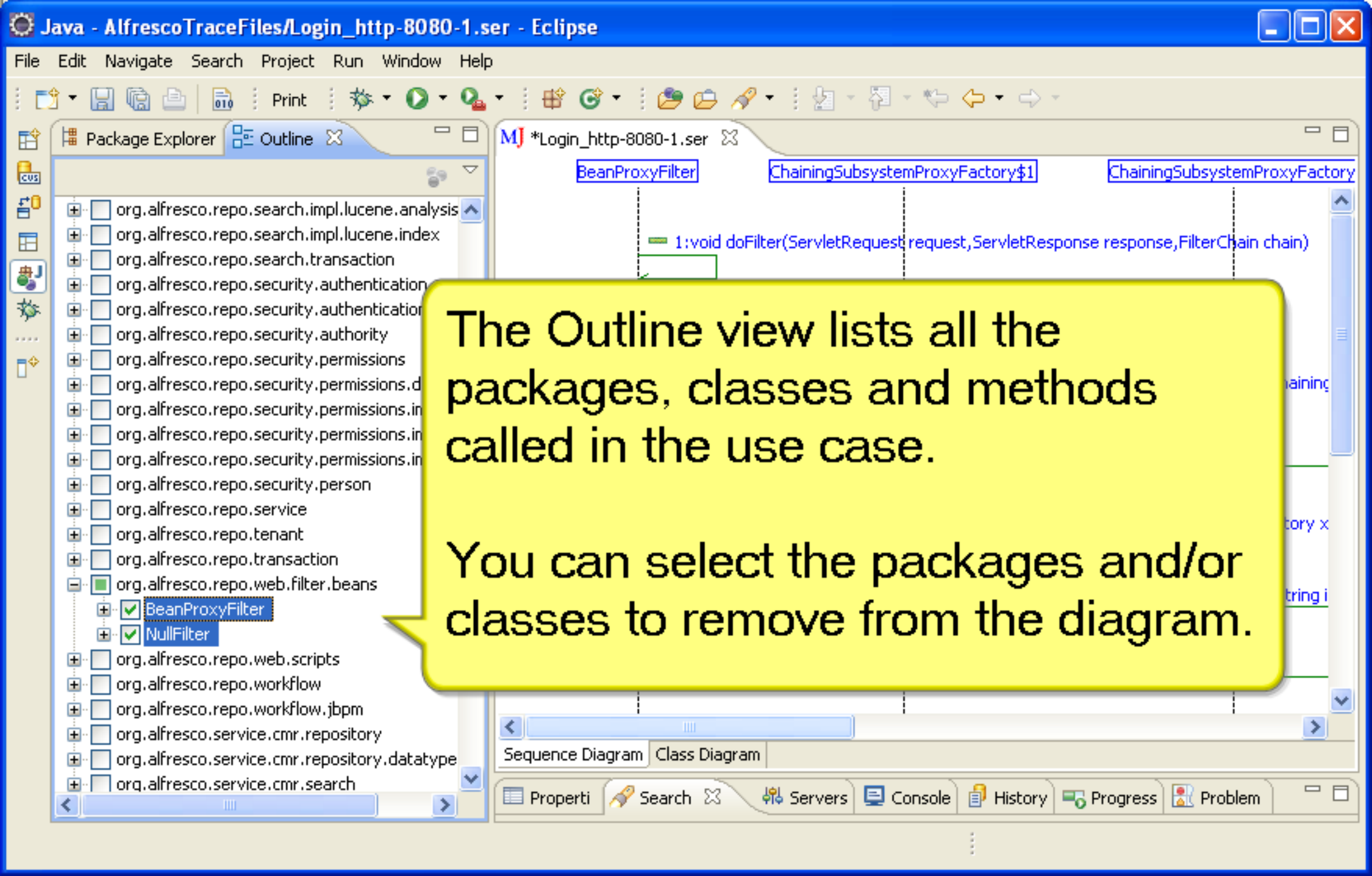


--Predefined Filters--

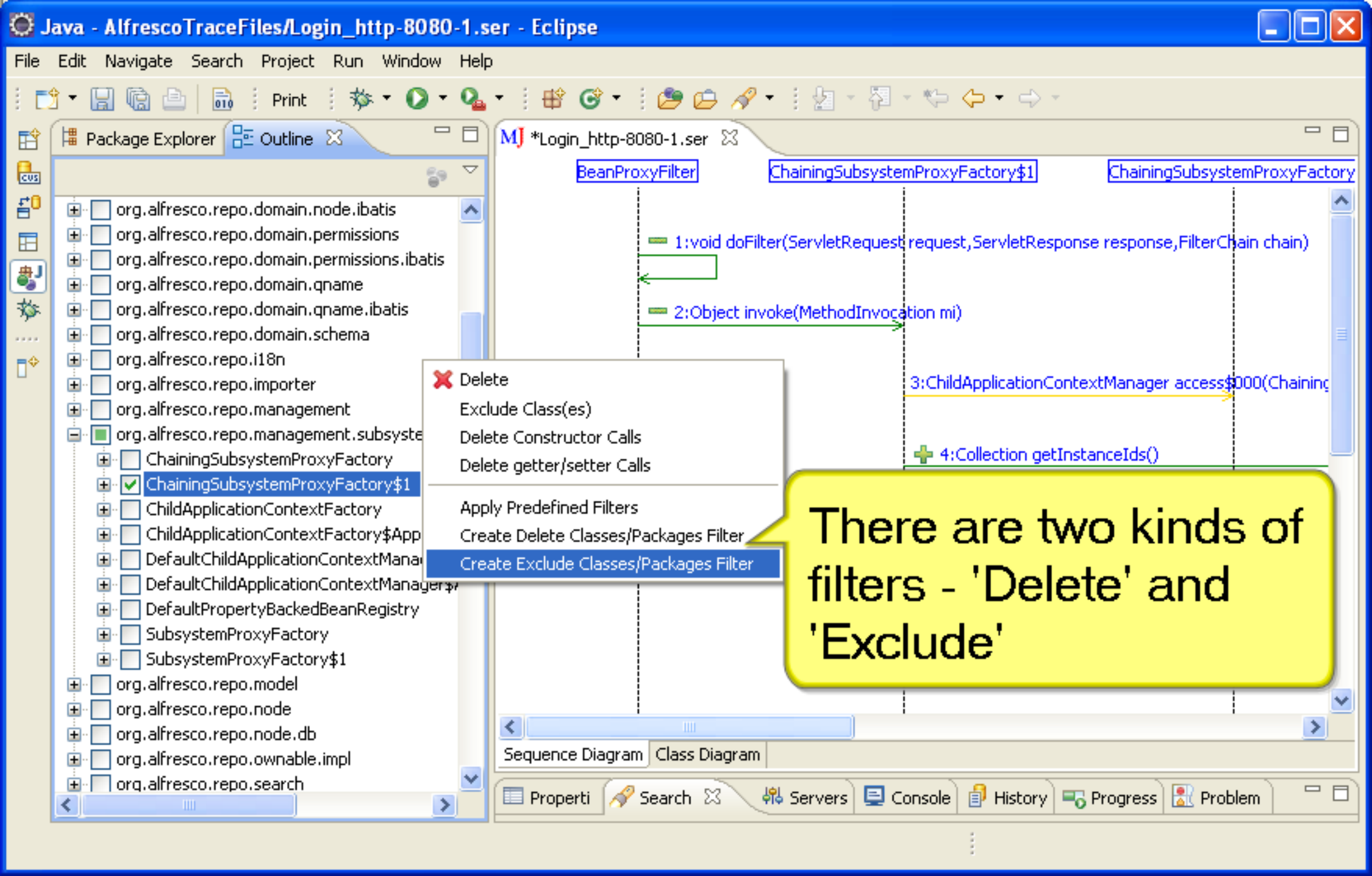
Filters allow you to see the diagram at different levels of details.

Let's see how to define and apply the filters.



The Outline view lists all the packages, classes and methods called in the use case.

You can select the packages and/or classes to remove from the diagram.



- Delete
- Exclude Class(es)
- Delete Constructor Calls
- Delete getter/setter Calls
- Apply Predefined Filters
- Create Delete Classes/Packages Filter
- Create Exclude Classes/Packages Filter

There are two kinds of filters - 'Delete' and 'Exclude'

'Exclude' filter deletes all calls to a class, but retains the calls from a class.

Example: When a Servlet calls a DAO through a common controller class, 'excluding' the controller shows the call to the DAO from the Servlet.

Delete Constructor Calls
Delete getter/setter Calls
Apply Predefined Filters
Create Delete Classes/Packages Filter
Create Exclude Classes/Packages Filter

+ 4:Collection getInstanceIds()

5:String access\$100(ChainingSubsystemProxyFactory x

+ 6:ApplicationContext getApplicationContext(String i

7:boolean isActive()

Sequence Diagram Class Diagram

Properti

Search

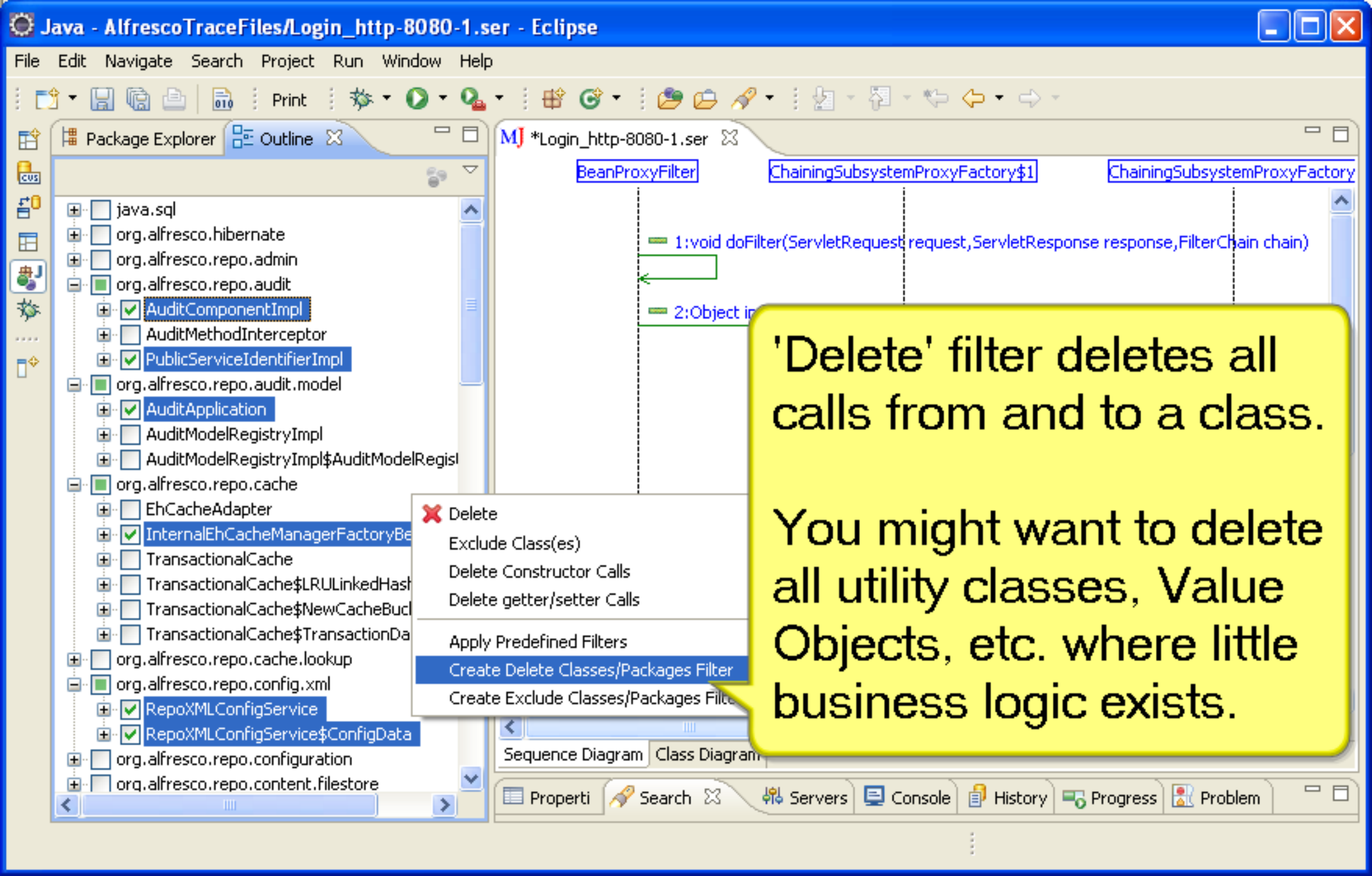
Servers

Console

History

Progress

Problem



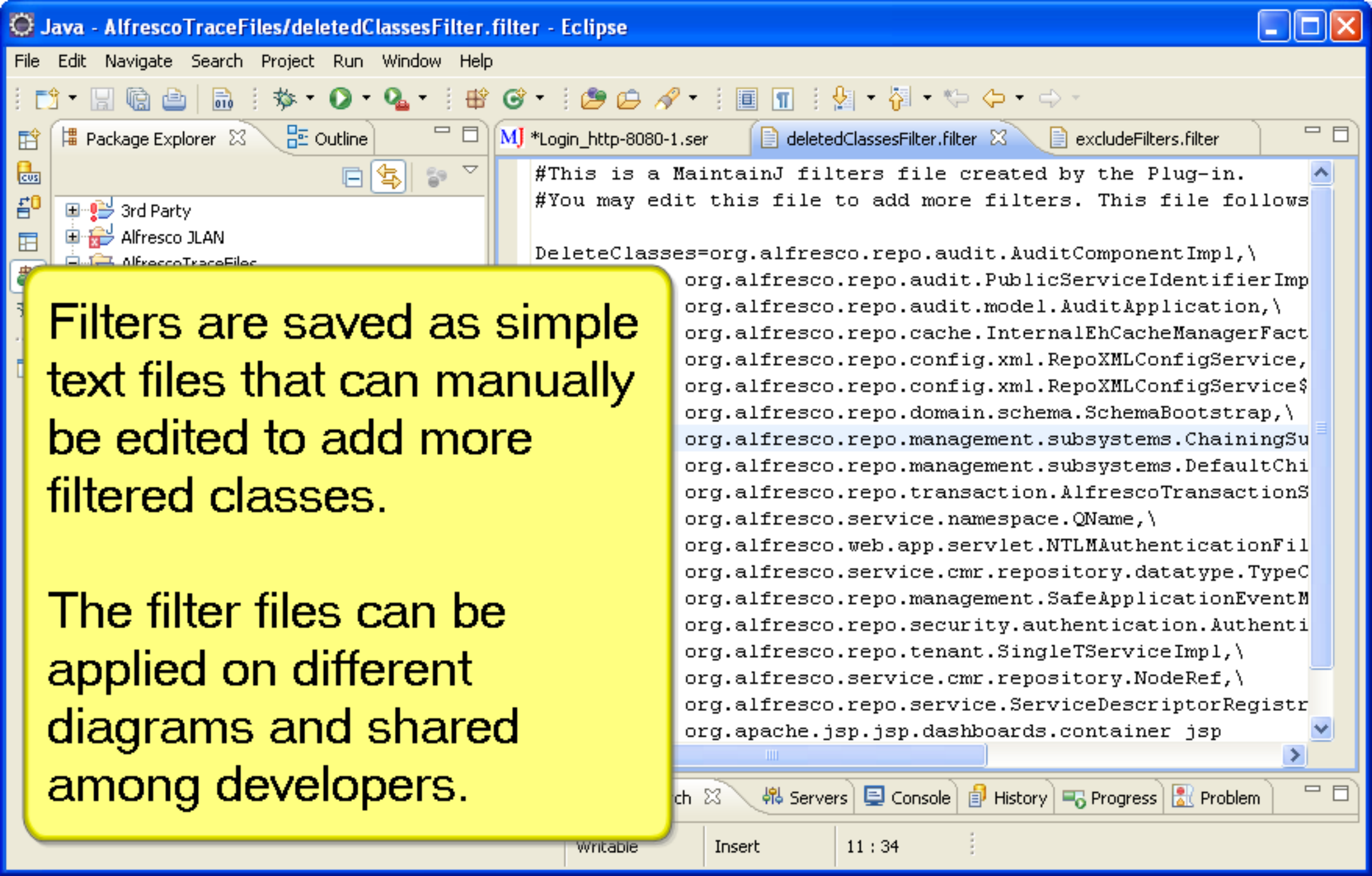
Package Explorer Outline

- java.sql
- org.alfresco.hibernate
- org.alfresco.repo.admin
- org.alfresco.repo.audit
 - AuditComponentImpl
 - AuditMethodInterceptor
 - PublicServiceIdentifierImpl
- org.alfresco.repo.audit.model
 - AuditApplication
 - AuditModelRegistryImpl
 - AuditModelRegistryImpl\$AuditModelRegist
- org.alfresco.repo.cache
 - EhCacheAdapter
 - InternalEhCacheManagerFactoryBe
 - TransactionalCache
 - TransactionalCache\$LRULinkedHash
 - TransactionalCache\$NewCacheBuc
 - TransactionalCache\$TransactionDa
- org.alfresco.repo.cache.lookup
- org.alfresco.repo.config.xml
 - RepoXMLConfigService
 - RepoXMLConfigService\$ConfigData
- org.alfresco.repo.configuration
- org.alfresco.repo.content.filestore



- Delete
- Exclude Class(es)
- Delete Constructor Calls
- Delete getter/setter Calls
- Apply Predefined Filters
- Create Delete Classes/Packages Filter
- Create Exclude Classes/Packages Filter

'Delete' filter deletes all calls from and to a class. You might want to delete all utility classes, Value Objects, etc. where little business logic exists.

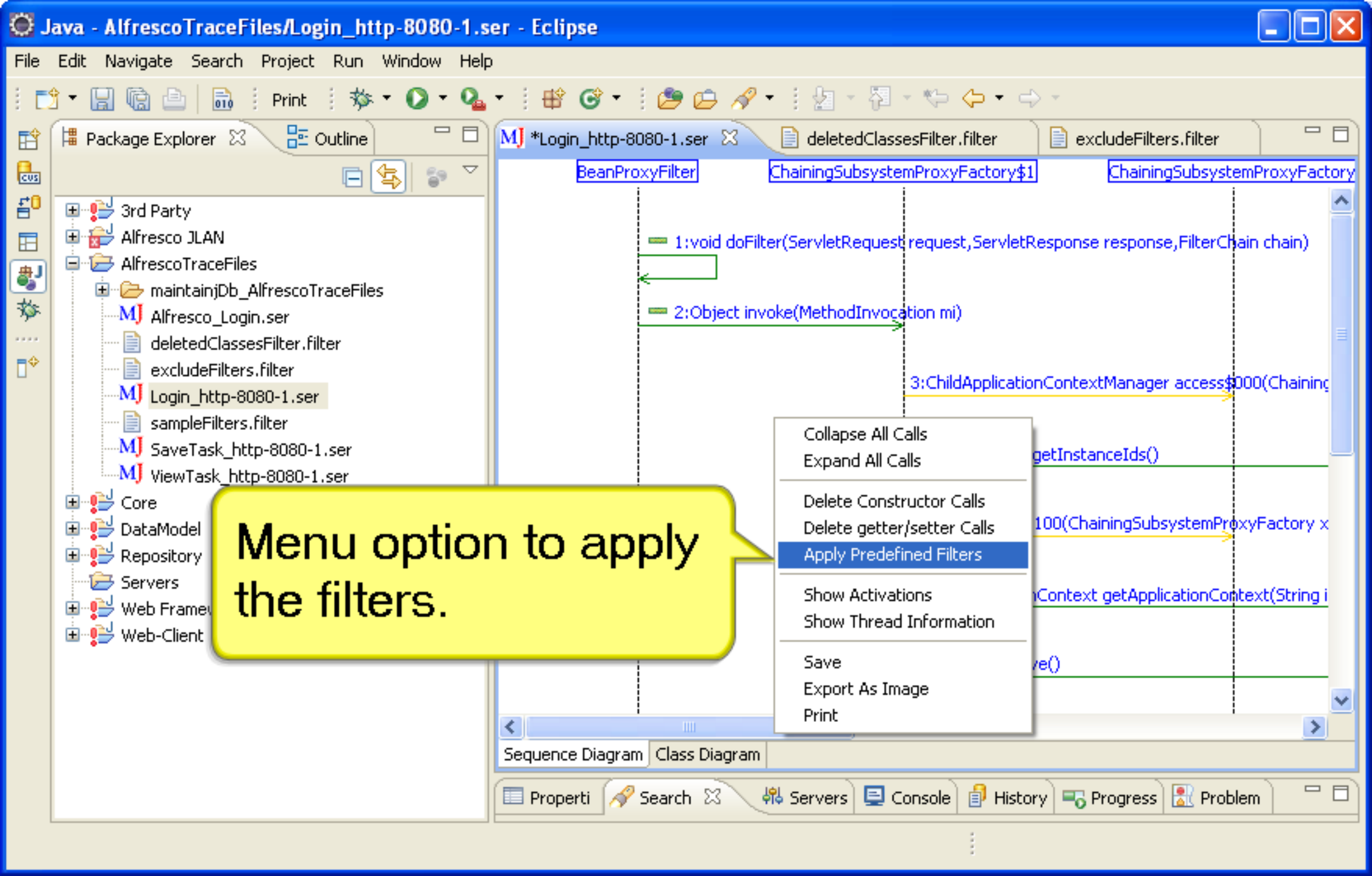


Filters are saved as simple text files that can manually be edited to add more filtered classes.

The filter files can be applied on different diagrams and shared among developers.

```
#This is a MaintainJ filters file created by the Plug-in.
#You may edit this file to add more filters. This file follows

DeleteClasses=org.alfresco.repo.audit.AuditComponentImpl, \
org.alfresco.repo.audit.PublicServiceIdentifierImp
org.alfresco.repo.audit.model.AuditApplication, \
org.alfresco.repo.cache.InternalEhCacheManagerFact
org.alfresco.repo.config.xml.RepoXMLConfigService,
org.alfresco.repo.config.xml.RepoXMLConfigService$
org.alfresco.repo.domain.schema.SchemaBootstrap, \
org.alfresco.repo.management.subsystems.ChainingSu
org.alfresco.repo.management.subsystems.DefaultChi
org.alfresco.repo.transaction.AlfrescoTransactionS
org.alfresco.service.namespace.QName, \
org.alfresco.web.app.servlet.NTLMAuthenticationFil
org.alfresco.service.cmr.repository.datatype.TypeC
org.alfresco.repo.management.SafeApplicationEventM
org.alfresco.repo.security.authentication.Authenti
org.alfresco.repo.tenant.SingleTServiceImpl, \
org.alfresco.service.cmr.repository.NodeRef, \
org.alfresco.repo.service.ServiceDescriptorRegistr
org.apache.jsp.jsp.dashboards.container.jsp
```



Menu option to apply the filters.

Select Filter File(s) to Apply

Look in: AlfrescoTraceFiles

- maintainjDb_AlfrescoTraceFiles
- deletedClassesFilter.filter
- excludeFilters.filter
- sampleFilters.filter

My Recent Documents

Desktop

My Documents

My Computer

My Network

You can select multiple filter files to apply on the diagram.

You could define a filter to delete all Value Objects and another to delete all DAO classes and apply one at a time or both of them at the same time.

File name: "excludeFilters.filter" "deletedClassesFilter.filter"

Open

Files of type: Filter files (*.filter)

Cancel

7:boolean isActive()

Sequence Diagram Class Diagram

Properti

Search

Servers

Console

History

Progress

Problem

Package Explorer Outline

- 3rd Party
- Alfresco JLAN
- AlfrescoTraceFiles
 - maintainiDb AlfrescoTraceFiles
- Web-Client

In this sample, all plumbing calls are removed to show the concrete calls where the authentication logic is implemented.

